

# Westview

Creating a better world...  
one person at a time.

RIL-GARDENA PROGRAM NEWSLETTER

Volume 1, No. 1

## "Pieces of Me" Spring Profile Showcase



Clients proudly display their certificates at Pieces of Me Showcase

"Pieces of Me Spring Profile Showcase" was presented at RIL on Thursday, April 21<sup>st</sup> and was a great success. As friends, family, and supporters gathered to watch their loved ones walk the runway, the clients beamed with pride, confidence, and joy. The music began and the clients went into action smiling from ear to ear. Many clients carried props such as cameras, hats, and brief cases symbolizing, in part, who they are, their aspirations or hobbies.

The red carpet, balloons, cameras, and video camera really made the clients feel significant and special. Most importantly, it gave them a sense of independence by being able to express their personalities through fashion, gestures, personality, and props.

As the event closed the clients were awarded certificates for participation and were recognized and honored for sharing pieces of who they are. The event was RIL's first Spring Profile Show Case, a truly memorable occasion and one to be repeated.



Pieces of Me Runway



Attending the Pieces of me Spring Profile Showcase(L toR): Westview CEO, Gregg Gann; Westview Quality Assurance Manager, Linda Callaghan, Westview LA Operations Director, Melvin Randolph.

## CREATIVE EXPRESSIONS: PAINTING

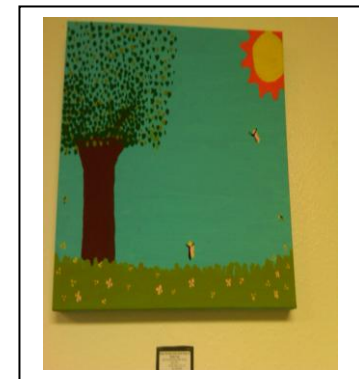
Painting is creative communication just as poetry, photography and dance. Yet unlike many creative arts, painting eliminates the strict rules and disciplines required when working within other art-forms. RIL clients are encouraged to express themselves on canvass and eagerly do so regardless of personal challenges or limited abilities.



Client Artwork



Client Artwork



## RIL Highlights

- October Annual Halloween Costume Dance
- December 2010 Holiday Gathering "Season's Greetings"
- February 2011 Black History Social- "Celebrating a Rich Culture and Legacy"
- February 2011 Valentine' Day Dance- "Sweet Treats & Royalty Court"
- March 2011 St. Patrick's Day Dance- " Royal Clover Court"

## Upcoming Events

- April 2011- Pieces of Me Profile Showcase
- May 2011- Memorial Day BBQ
- June 14-17<sup>th</sup> 2011 Westview Services 25<sup>th</sup> Anniversary Sport's Fest Competition
- July 2011- Fourth of July Luau & BBQ
- August 2011- Beach Party Redondo Beach



Valentine's Day Party



St. Patrick's Day "Royal Clover Court"



St. Patrick's Day Dance

## RIL Gardena

**Specializing in Behavior  
and Communication  
Challenges:**

**18525 S. Main St. Ste.B  
Gardena, CA 90248**

**Phone:**

**(310) 532-6763**

**Fax:**

**(310) 532-6765**

**Web Site:**

**[www.westviewservices.org](http://www.westviewservices.org)**

*“It was ability that  
mattered, not disability,  
which is a word I'm not  
crazy about using.”  
Marleen Matlin*

## Our Mission

RIL's mission is to provide support and training to assist each individual in attaining their highest potential.

## Our Services

- *Volunteer Sites*
- *Adult School and local colleges*
- *Transition to employment program*
- *Computer Class*
- *Softball League*
- *Science Center, Music Center,  
Painting Center*
- *Animal Care Class*
- *Gardening Class*
- *Physical Fitness*
- *Client Transportation Provided*
- *Basic Computer Training*
- *Employment Readiness*
- *Experienced, Professional, Trained,  
Caring & Dedicated Staff*

*If you or someone you know  
is interested in learning more  
about our program or visiting  
our facility, please contact*

*us at:*

*(310) 532-6763*

*hours of operation:*

*Monday-Friday*

*7:00am-3:30pm*



**Westview is a non-profit service agency dedicated to enriching the lives of people through services designed to realize their potential.**